



TEST REPORT

Applicant : 3M KOREA Ltd.
Address : Yoido P.O Box 93
Seoul, Korea

Page: 1 of 3
Date: Aug. 24, 2011

Report No. RT11R-U1638-003-E2

Sample Description : The following submitted sample(s) said to be:-

Name/Type of Product : 3310T
Sample ID No. : RT11R-U1638-003
Manufacturer/Vender : 3M KOREA Ltd.

Sample received : Aug. 19, 2011
Testing Date : Aug. 19, 2011 ~ Aug. 24, 2011
Testing Environment : Temperature : (24 ± 2) °C, Humidity : (60 ± 5) % R.H.

Test Method(s) : Please see the following page(s).
Test Result(s) : Please see the following page(s).

* Note 1 : The test results presented in this report relate only to the object tested.

* Note 2 : This report shall not be reproduced except in full without the written approval of the testing laboratory.

Approved by,

E.Y.Lee / Lab. Technical Manager

Authorized by,

H.W.Yoo / Lab. General Manager

This Test Report is issued by the Company subject to its Terms and Conditions of Business printed overleaf. Attention is drawn to the limitations of liability, indemnification and jurisdictional issues defined therein. This Test Report shall not be reproduced, except in full, without prior written consent of the Company.

Intertek Testing Services Korea Ltd.

Seoul Office: Tel : 02-6090-9500 Fax : 02-3409-0026 Daegu Office : Tel : 053-600-8647 Fax : 053-600-8645 Web Site : www.Intertek.co.kr
Seoul Lab. Address : 1/F, A-ju Digital Tower, #284-56, Seongsu 2-ga, Seongdong-Gu, Seoul, 133-833 Korea
Ulsan Lab. Address : #340-2, Yongam-Ri, Chongryang-Myun, Ulju-Gun, Ulsan 689-865 Korea

TEST REPORT

Report No. RT11R-U1638-003-E2

Sample ID No. : RT11R-U1638-003

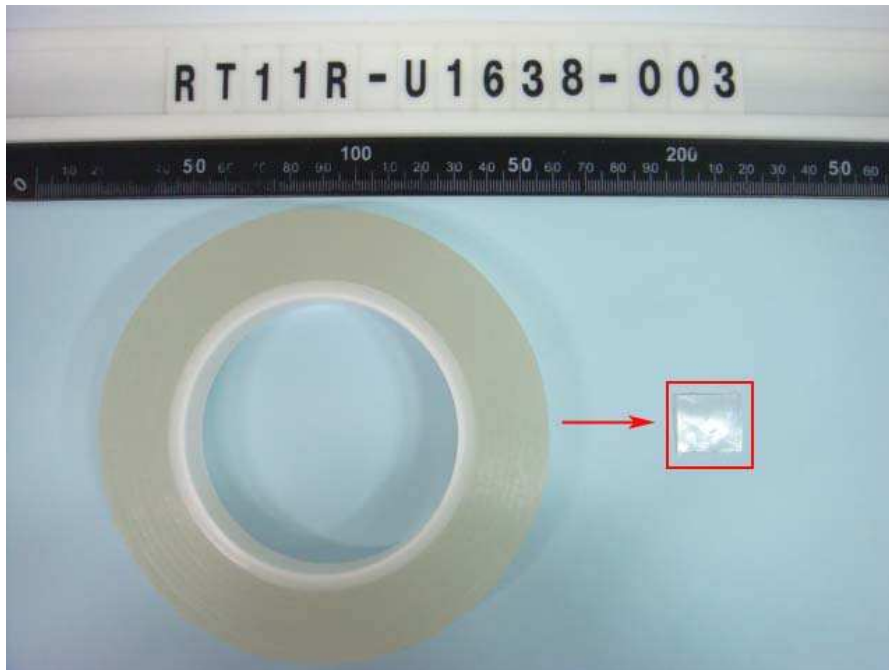
Sample Description : 3310T

Test Item	Unit	Test Method	MDL	Result
Bromine (Br)	mg/kg	With reference to EN 14582, by oxygen combustion with bomb and determined by IC	30	N.D.
Chlorine (Cl)	mg/kg	With reference to EN 14582, by oxygen combustion with bomb and determined by IC	30	N.D.
Fluorine (F)	mg/kg	With reference to EN 14582, by oxygen combustion with bomb and determined by IC	30	N.D.
Iodine (I)	mg/kg	With reference to EN 14582, by oxygen combustion with bomb and determined by IC	30	N.D.

Tested by : YK Cho

Notes : mg/kg = ppm = parts per million
 <= Less than
 N.D. = Not detected (<MDL)
 MDL = Method detection limit

* View of sample as received;-



This Test Report is issued by the Company subject to its Terms and Conditions of Business printed overleaf. Attention is drawn to the limitations of liability, indemnification and jurisdictional issues defined therein. This Test Report shall not be reproduced, except in full, without prior written consent of the Company.

Intertek Testing Services Korea Ltd.

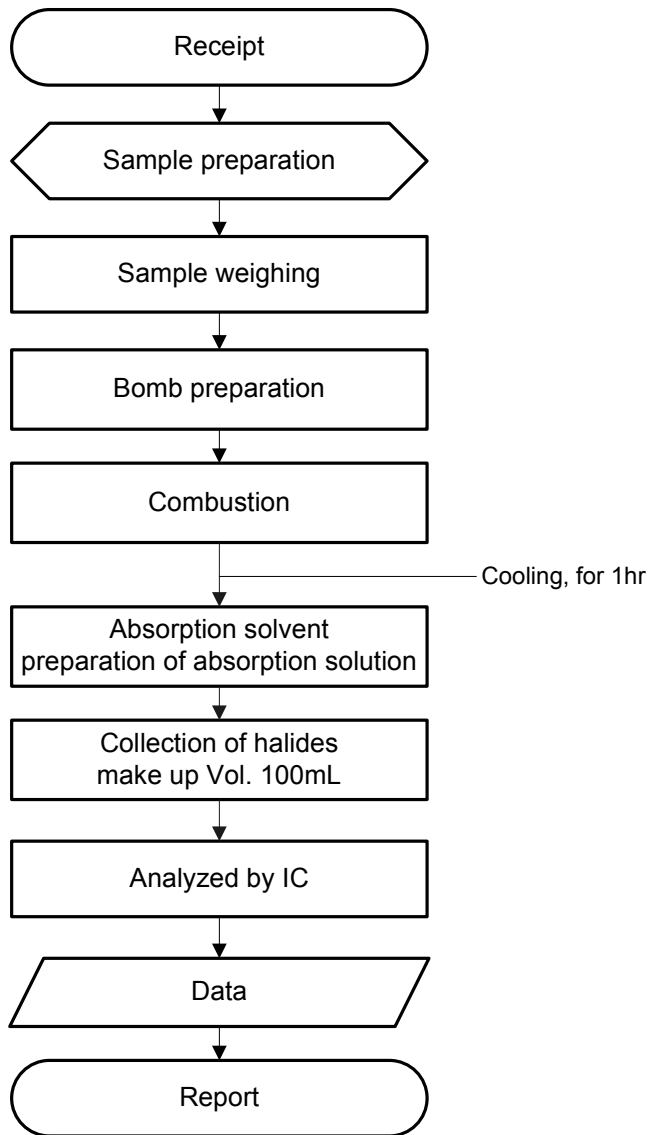


TEST REPORT

Page: 3 of 3
Date: Aug. 24, 2011

Report No. RT11R-U1638-003-E2
Sample ID No. : RT11R-U1638-003
Sample Description : 3310T

Flow Chart (Halogen)



***** End of Report *****

This Test Report is issued by the Company subject to its Terms and Conditions of Business printed overleaf. Attention is drawn to the limitations of liability, indemnification and jurisdictional issues defined therein. This Test Report shall not be reproduced, except in full, without prior written consent of the Company.

Intertek Testing Services Korea Ltd.

Seoul Office: Tel : 02-6090-9500 Fax : 02-3409-0026 Daegu Office : Tel : 053-600-8647 Fax : 053-600-8645 Web Site : www.Intertek.co.kr
Seoul Lab. Address : 1/F, A-ju Digital Tower, #284-56, Seongsu 2-ga, Seongdong-Gu, Seoul, 133-833 Korea
Ulsan Lab. Address : #340-2, Yongam-Ri, Chongryang-Myun, Ulju-Gun, Ulsan 689-865 Korea