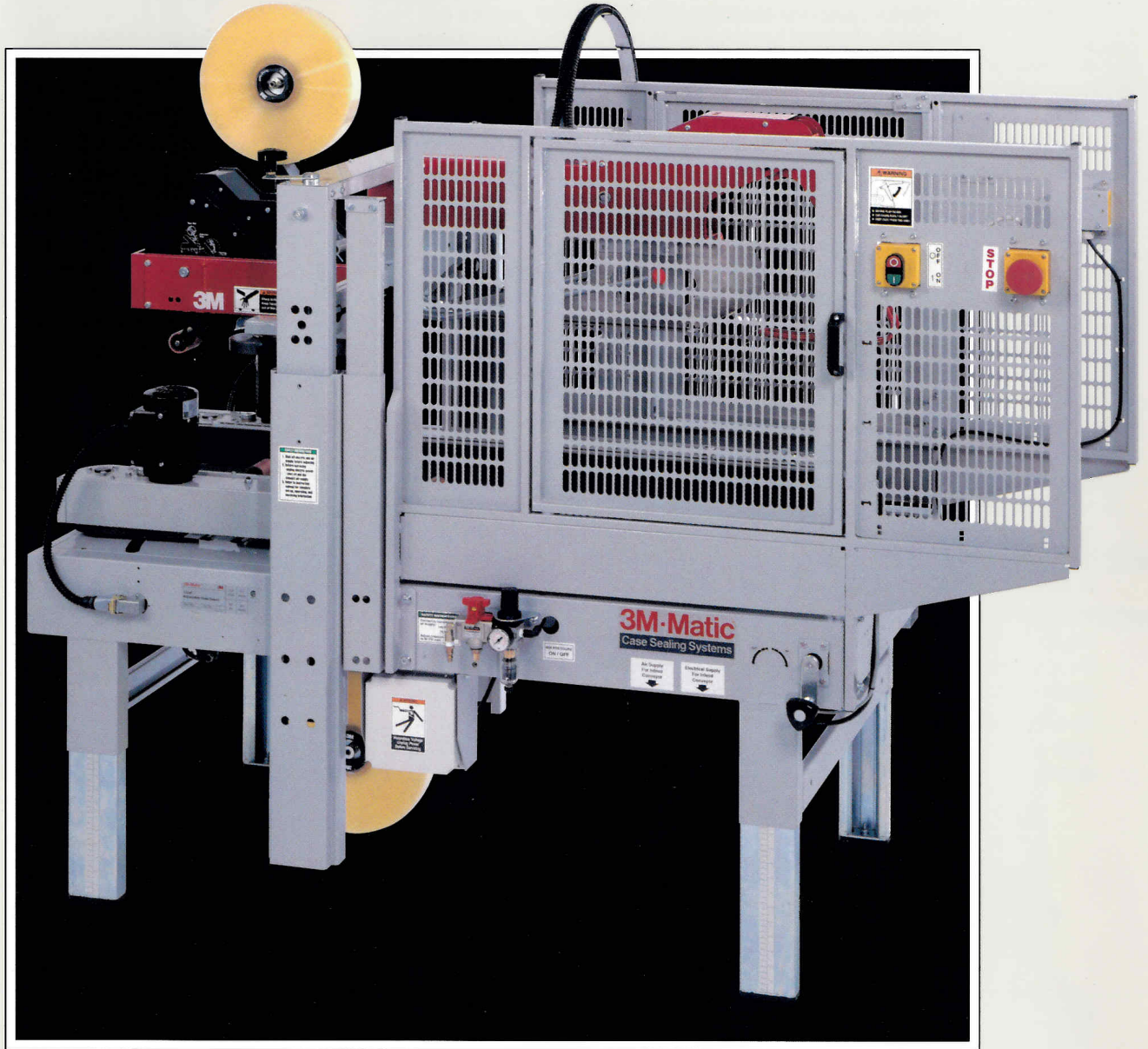


# The 3M-Matic™ 120af Automatic Adjustable Case Sealer



**3M** Packaging

# The 3M-Matic™ 120af Automatic Adjustable Case Sealer

## The operator-free, all-in-one case sealer for automatic productivity

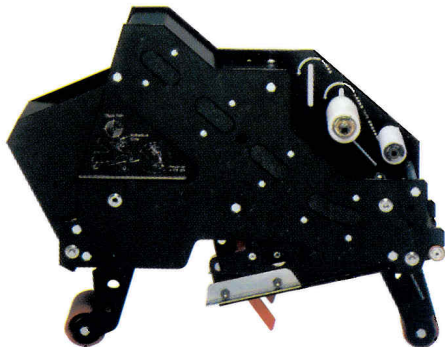
The 3M-Matic™ 120af Automatic Adjustable Case Sealer is a fully automatic, all-in-one unit for a variety of top and bottom case sealing applications. Our new 3M-Matic case sealers are specially designed to be versatile and productive. They're sturdy, compact and easy to install. The new low impact AccuGlide™ II taping head represents 3M's commitment to innovation as the industry leader in case sealing systems. And 3M-Matic components are available worldwide, just one example of how 3M case sealers are built with the demands of global businesses in mind. Laboratory-tested and field-proven, the unique, patented AccuGlide II taping head is designed to give you accurate performance in applying all Scotch™ brand box sealing tapes.

The 3M-Matic 120af case sealer places tight, consistent top and bottom seals on regular slotted containers with production rates of up to 27 boxes per minute – all without the need for an operator. It folds the top flaps and seals both top and bottom seams automatically. Quick box height/width adjustment and a removable bottom taping head make the 3M-Matic 120af case sealer very versatile. Its compact size saves valuable floor space, and a cleaner, simpler design means more trouble-free operation. Standard features include dual compression rollers that help position top flaps for improved sealing; side shields at machine infeed with a hinged access door and safety interlock; easily accessible stop switches on each side of the machine; and friction brake drums to prevent tape overrun and provide more consistent tape application. Additional accessories are available as options.

3M offers an entire line of adjustable, random and fully automatic 3M-Matic equipment that's performance-matched with Scotch brand box sealing tapes for optimum case sealing results. When used together, they provide secure, consistent seals without the mess of water-activated tape, the potential damage of staples or the costly clean-up, inconsistent seal and maintenance of automated glue systems.

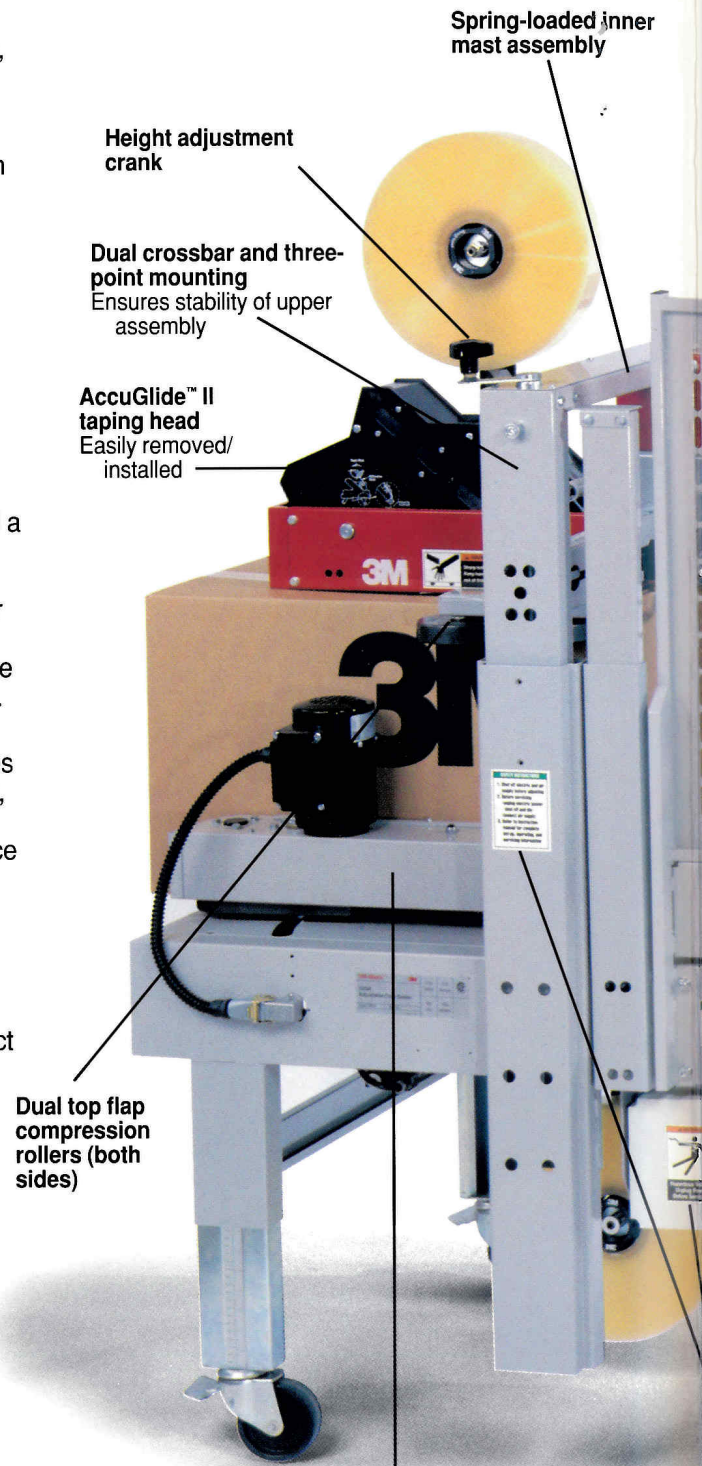
Packaging professionals have been relying on the quality of 3M-Matic equipment and Scotch brand tapes for years, and for good reason. Now there's even better reason with the new generation of 3M-Matic case sealing equipment.

To order the new 3M-Matic 120af Automatic Adjustable Case Sealer, contact your nearest 3M sales representative or your local 3M-Matic equipment distributor, or call 1-800-722-5463.



### AccuGlide™ II taping head

3M's advanced, low-impact AccuGlide II taping head with its curvilinear track ensures that even lightweight corrugated cartons are securely and carefully sealed. It provides positive tape starting and precise tape application. The spring-mounted upper taping head compensates for overpacked boxes. Applies standard 2.75 inch [70 mm] tape leg lengths. Taping heads can be adjusted to apply 2.00 inch [50 mm] tape leg lengths. A built-in blade oiler pad helps prevent adhesive buildup. The AccuGlide II taping head comes with a 90-day warranty on knife blades, springs and rollers, and a 3-year warranty on all other parts.



### Side drive belt assemblies (2)

- Positive box drive through top flap folding and taping
- Self-centering
- Easily installed laced box drive belt
- Assemblies easily removed/installed
- Belt speed 75 feet per minute [.38m/s]

# The 3M-Matic™ 120af Automatic Adjustable Case Sealer

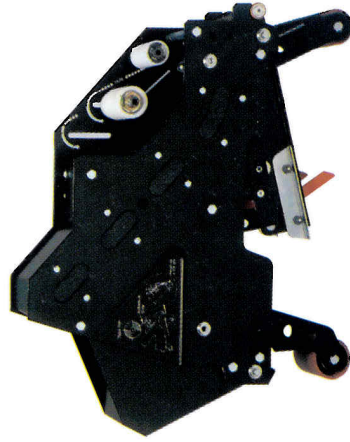
## The operator-free, all-in-one case sealer for automatic productivity

The 3M-Matic™ 120af Automatic Adjustable Case Sealer is a fully automatic, all-in-one unit for a variety of top and bottom case sealing applications. Our new 3M-Matic case sealers are specially designed to be versatile and productive. They're sturdy, compact and easy to install. The new low impact AccuGlide™ II taping head represents 3M's commitment to innovation as the industry leader in case sealing systems. And 3M-Matic components are available worldwide, just one example of how 3M case sealers are built with the demands of global businesses in mind. Laboratory-tested and field-proven, the unique, patented AccuGlide II taping head is designed to give you accurate performance in applying all Scotch™ brand box sealing tapes.

The 3M-Matic 120af case sealer places tight, consistent top and bottom seals on regular slotted containers with production rates of up to 27 boxes per minute – all without the need for an operator. It folds the top flaps and seals both top and bottom seams automatically. Quick box height/width adjustment and a removable bottom taping head make the 3M-Matic 120af case sealer very versatile. Its compact size saves valuable floor space, and a cleaner, simpler design means more trouble-free operation. Standard features include dual compression rollers that help position top flaps for improved sealing; side shields at machine infeed with a hinged access door and safety interlock; easily accessible stop switches on each side of the machine; and friction brake drums to prevent tape overrun and provide more consistent tape application. Additional accessories are available as options. 3M offers an entire line of adjustable, random and fully automatic 3M-Matic equipment that's performance-matched with Scotch brand box sealing tapes for optimum case sealing results. When used together, they provide secure, consistent seals without the mess of water-activated tape, the potential damage of staples or the costly clean-up, inconsistent seal and maintenance of automated glue systems.

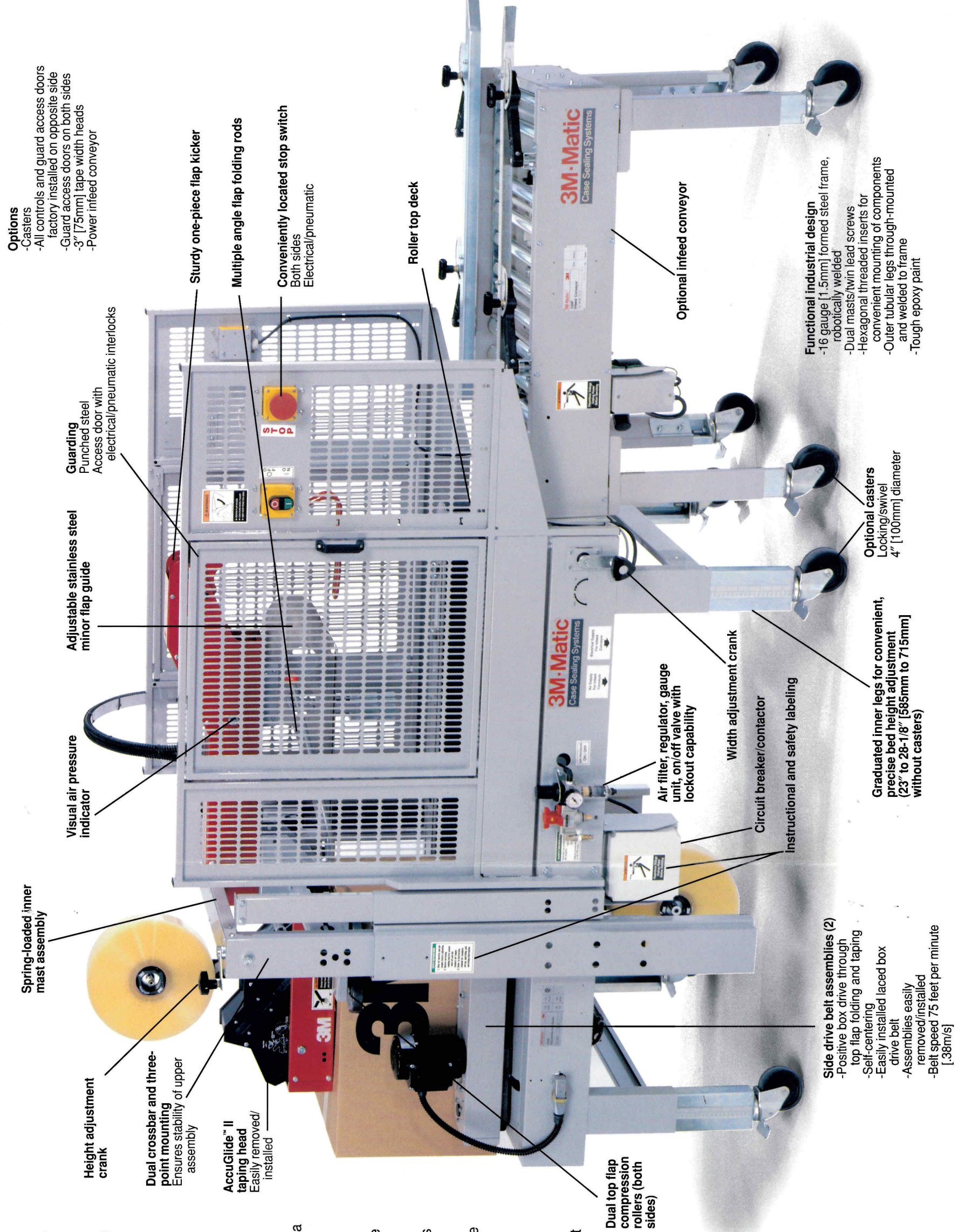
Packaging professionals have been relying on the quality of 3M-Matic equipment and Scotch brand tapes for years, and for good reason. Now there's even better reason with the new generation of 3M-Matic case sealing equipment.

To order the new 3M-Matic 120af Automatic Adjustable Case Sealer, contact your nearest 3M sales representative or your local 3M-Matic equipment distributor, or call 1-800-722-5463.



### AccuGlide™ II taping head

3M's advanced, low-impact AccuGlide II taping head with its curvilinear track ensures that even lightweight corrugated cartons are securely and carefully sealed. It provides positive tape starting and precise tape application. The spring-mounted upper taping head compensates for overpacked boxes. Applies standard 2.75 inch [70 mm] tape leg lengths. Taping heads can be adjusted to apply 2.00 inch [50 mm] tape leg lengths. A built-in blade oiler pad helps prevent adhesive buildup. The AccuGlide II taping head comes with a 90-day warranty on knife blades, springs and rollers, and a 3-year warranty on all other parts.



### Options

- Casters
- All controls and guard access doors factory installed on opposite side
- Guard access doors on both sides
- 3" [75mm] tape width heads
- Power infeed conveyor

Spring-loaded inner mast assembly

Visual air pressure indicator

Adjustable stainless steel minor flap guide

Guarding Punched steel Access door with electrical/pneumatic interlocks

Sturdy one-piece flap kicker

AccuGlide™ II taping head Easily removed/installed

Dual crossbar and three-point mounting Ensures stability of upper assembly

Height adjustment crank

Conveniently located stop switch Both sides Electrical/pneumatic

Multiple angle flap folding rods

Roller top deck

Dual top flap compression rollers (both sides)

Air filter, regulator, gauge unit, on/off valve with lockout capability

Width adjustment crank

Circuit breaker/contactors

Graduated inner legs for convenient, precise bed height adjustment (23" to 28-1/8" [585mm to 715mm] without casters)

### Side drive belt assemblies (2)

- Positive box drive through top flap folding and taping
- Self-centering
- Easily installed laced box drive belt
- Assemblies easily removed/installed
- Belt speed 75 feet per minute [.38m/s]

Optional infeed conveyor

### Functional industrial design

- 16 gauge [1.5mm] formed steel frame, robotically welded
- Dual masts/twin lead screws
- Hexagonal threaded inserts for convenient mounting of components
- Outer tubular legs through-mounted and welded to frame
- Tough epoxy paint

Optional casters Locking/swivel 4" [100mm] diameter

Graduated inner legs for convenient, precise bed height adjustment (23" to 28-1/8" [585mm to 715mm] without casters)

Circuit breaker/contactors

Graduated inner legs for convenient, precise bed height adjustment (23" to 28-1/8" [585mm to 715mm] without casters)

Circuit breaker/contactors

Graduated inner legs for convenient, precise bed height adjustment (23" to 28-1/8" [585mm to 715mm] without casters)

Circuit breaker/contactors

Graduated inner legs for convenient, precise bed height adjustment (23" to 28-1/8" [585mm to 715mm] without casters)

Circuit breaker/contactors

Graduated inner legs for convenient, precise bed height adjustment (23" to 28-1/8" [585mm to 715mm] without casters)

Circuit breaker/contactors

Graduated inner legs for convenient, precise bed height adjustment (23" to 28-1/8" [585mm to 715mm] without casters)

Circuit breaker/contactors

Graduated inner legs for convenient, precise bed height adjustment (23" to 28-1/8" [585mm to 715mm] without casters)

Circuit breaker/contactors

Graduated inner legs for convenient, precise bed height adjustment (23" to 28-1/8" [585mm to 715mm] without casters)

Circuit breaker/contactors

Graduated inner legs for convenient, precise bed height adjustment (23" to 28-1/8" [585mm to 715mm] without casters)

Circuit breaker/contactors

Graduated inner legs for convenient, precise bed height adjustment (23" to 28-1/8" [585mm to 715mm] without casters)

Circuit breaker/contactors

Graduated inner legs for convenient, precise bed height adjustment (23" to 28-1/8" [585mm to 715mm] without casters)

Circuit breaker/contactors

Graduated inner legs for convenient, precise bed height adjustment (23" to 28-1/8" [585mm to 715mm] without casters)

Circuit breaker/contactors

Graduated inner legs for convenient, precise bed height adjustment (23" to 28-1/8" [585mm to 715mm] without casters)

Circuit breaker/contactors

Graduated inner legs for convenient, precise bed height adjustment (23" to 28-1/8" [585mm to 715mm] without casters)

Circuit breaker/contactors

Graduated inner legs for convenient, precise bed height adjustment (23" to 28-1/8" [585mm to 715mm] without casters)

Circuit breaker/contactors

Graduated inner legs for convenient, precise bed height adjustment (23" to 28-1/8" [585mm to 715mm] without casters)

Circuit breaker/contactors

Graduated inner legs for convenient, precise bed height adjustment (23" to 28-1/8" [585mm to 715mm] without casters)

Circuit breaker/contactors

Graduated inner legs for convenient, precise bed height adjustment (23" to 28-1/8" [585mm to 715mm] without casters)

Circuit breaker/contactors

Graduated inner legs for convenient, precise bed height adjustment (23" to 28-1/8" [585mm to 715mm] without casters)

Circuit breaker/contactors

Graduated inner legs for convenient, precise bed height adjustment (23" to 28-1/8" [585mm to 715mm] without casters)

Circuit breaker/contactors

Graduated inner legs for convenient, precise bed height adjustment (23" to 28-1/8" [585mm to 715mm] without casters)

Circuit breaker/contactors

Graduated inner legs for convenient, precise bed height adjustment (23" to 28-1/8" [585mm to 715mm] without casters)

Circuit breaker/contactors

Graduated inner legs for convenient, precise bed height adjustment (23" to 28-1/8" [585mm to 715mm] without casters)

Circuit breaker/contactors

Graduated inner legs for convenient, precise bed height adjustment (23" to 28-1/8" [585mm to 715mm] without casters)

Circuit breaker/contactors

Graduated inner legs for convenient, precise bed height adjustment (23" to 28-1/8" [585mm to 715mm] without casters)

Circuit breaker/contactors

Graduated inner legs for convenient, precise bed height adjustment (23" to 28-1/8" [585mm to 715mm] without casters)

Circuit breaker/contactors

Graduated inner legs for convenient, precise bed height adjustment (23" to 28-1/8" [585mm to 715mm] without casters)

Circuit breaker/contactors

Graduated inner legs for convenient, precise bed height adjustment (23" to 28-1/8" [585mm to 715mm] without casters)

Circuit breaker/contactors

Graduated inner legs for convenient, precise bed height adjustment (23" to 28-1/8" [585mm to 715mm] without casters)

Circuit breaker/contactors

Graduated inner legs for convenient, precise bed height adjustment (23" to 28-1/8" [585mm to 715mm] without casters)

Circuit breaker/contactors

Graduated inner legs for convenient, precise bed height adjustment (23" to 28-1/8" [585mm to 715mm] without casters)

Circuit breaker/contactors

Graduated inner legs for convenient, precise bed height adjustment (23" to 28-1/8" [585mm to 715mm] without casters)

Circuit breaker/contactors

Graduated inner legs for convenient, precise bed height adjustment (23" to 28-1/8" [585mm to 715mm] without casters)

Circuit breaker/contactors

Graduated inner legs for convenient, precise bed height adjustment (23" to 28-1/8" [585mm to 715mm] without casters)

Circuit breaker/contactors

Graduated inner legs for convenient, precise bed height adjustment (23" to 28-1/8" [585mm to 715mm] without casters)

Circuit breaker/contactors

Graduated inner legs for convenient, precise bed height adjustment (23" to 28-1/8" [585mm to 715mm] without casters)

Circuit breaker/contactors

Graduated inner legs for convenient, precise bed height adjustment (23" to 28-1/8" [585mm to 715mm] without casters)

Circuit breaker/contactors

Graduated inner legs for convenient, precise bed height adjustment (23" to 28-1/8" [585mm to 715mm] without casters)

Circuit breaker/contactors

Graduated inner legs for convenient, precise bed height adjustment (23" to 28-1/8" [585mm to 715mm] without casters)

Circuit breaker/contactors

Graduated inner legs for convenient, precise bed height adjustment (23" to 28-1/8" [585mm to 715mm] without casters)

Circuit breaker/contactors

Graduated inner legs for convenient, precise bed height adjustment (23" to 28-1/8" [585mm to 715mm] without casters)

Circuit breaker/contactors

Graduated inner legs for convenient, precise bed height adjustment (23" to 28-1/8" [585mm to 715mm] without casters)

Circuit breaker/contactors

Graduated inner legs for convenient, precise bed height adjustment (23" to 28-1/8" [585mm to 715mm] without casters)

Circuit breaker/contactors

Graduated inner legs for convenient, precise bed height adjustment (23" to 28-1/8" [585mm to 715mm] without casters)

Circuit breaker/contactors

Graduated inner legs for convenient, precise bed height adjustment (23" to 28-1/8" [585mm to 715mm] without casters)

Circuit breaker/contactors

Graduated inner legs for convenient, precise bed height adjustment (23" to 28-1/8" [585mm to 715mm] without casters)

Circuit breaker/contactors

Graduated inner legs for convenient, precise bed height adjustment (23" to 28-1/8" [585mm to 715mm] without casters)

Circuit breaker/contactors

Graduated inner legs for convenient, precise bed height adjustment (23" to 28-1/8" [585mm to 715mm] without casters)

Circuit breaker/contactors

Graduated inner legs for convenient, precise bed height adjustment (23" to 28-1/8" [585mm to 715mm] without casters)

Circuit breaker/contactors

Graduated inner legs for convenient, precise bed height adjustment (23" to 28-1/8" [585mm to 715mm] without casters)

Circuit breaker/contactors

Graduated inner legs for convenient, precise bed height adjustment (23" to 28-1/8" [585mm to 715mm] without casters)

Circuit breaker/contactors

Graduated inner legs for convenient, precise bed height adjustment (23" to 28-1/8" [585mm to 715mm] without casters)

Circuit breaker/contactors

Graduated inner legs for convenient, precise bed height adjustment (23" to 28-1/8" [585mm to 715mm] without casters)

Circuit breaker/contactors

Graduated inner legs for convenient, precise bed height adjustment (23" to 28-1/8" [585mm to 715mm] without casters)

Circuit breaker/contactors

Graduated inner legs for convenient, precise bed height adjustment (23" to 28-1/8" [585mm to 715mm] without casters)

Circuit breaker/contactors

Graduated inner legs for convenient, precise bed height adjustment (23" to 28-1/8" [585mm to 715mm] without casters)

Circuit breaker/contactors

Graduated inner legs for convenient, precise bed height adjustment (23" to 28-1/8" [585mm to 715mm] without casters)

Circuit breaker/contactors

Graduated inner legs for convenient, precise bed height adjustment (23" to 28-1/8" [585mm to 715mm] without casters)

Circuit breaker/contactors

Graduated inner legs for convenient, precise bed height adjustment (23" to 28-1/8" [585mm to 715mm] without casters)

Circuit breaker/contactors

Graduated inner legs for convenient, precise bed height adjustment (23" to 28-1/8" [585mm to 715mm] without casters)

Circuit breaker/contactors

Graduated inner legs for convenient, precise bed height adjustment (23" to 28-1/8" [585mm to 715mm] without casters)

Circuit breaker/contactors

Graduated inner legs for convenient, precise bed height adjustment (23" to 28-1/8" [585mm to 715mm] without casters)

Circuit breaker/contactors

Graduated inner legs for convenient, precise bed height adjustment (23" to 28-1/8" [585mm to 715mm] without casters)

Circuit breaker/contactors

Graduated inner legs for convenient, precise bed height adjustment (23" to 28-1/8" [585mm to 715mm] without casters)

Circuit breaker/contactors

Graduated inner legs for convenient, precise bed height adjustment (23" to 28-1/8" [585mm to 715mm] without casters)

Circuit breaker/contactors

Graduated inner legs for convenient, precise bed height adjustment (23" to 28-1/8" [585mm to 715mm] without casters)

Circuit breaker/contactors

Graduated inner legs for convenient, precise bed height adjustment (23" to 28-1/8" [585mm to 715mm] without casters)

Circuit breaker/contactors

Graduated inner legs for convenient, precise bed height adjustment (23" to 28-1/8" [585mm to 715mm] without casters)

Circuit breaker/contactors

Graduated inner legs for convenient, precise bed height adjustment (23" to 28-1/8" [585mm to 715mm] without casters)

Circuit breaker/contactors

Graduated inner legs for convenient, precise bed height adjustment (23" to 28-1/8" [585mm to 715mm] without casters)

Circuit breaker/contactors

Graduated inner legs for convenient, precise bed height adjustment (23" to 28-1/8" [585mm to 715mm] without casters)

Circuit breaker/contactors

Graduated inner legs for convenient, precise bed height adjustment (23" to 28-1/8" [585mm to 715mm] without casters)

Circuit breaker/contactors

Graduated inner legs for convenient, precise bed height adjustment (23" to 28-1/8" [585mm to 715mm] without casters)

Circuit breaker/contactors

Graduated inner legs for convenient, precise bed height adjustment (23" to 28-1/8" [585mm to 715mm] without casters)

Circuit breaker/contactors

Graduated inner legs for convenient, precise bed height adjustment (23" to 28-1/8" [585mm to 715mm] without casters)

Circuit breaker/contactors

Graduated inner legs for convenient, precise bed height adjustment (23" to 28-1/8" [585mm to 715mm] without casters)

Circuit breaker/contactors

Graduated inner legs for convenient, precise bed height adjustment (23" to 28-1/8" [585mm to 715mm] without casters)

Circuit breaker/contactors

Graduated inner legs for convenient, precise bed height adjustment (23" to 28-1/8" [585mm to 715mm] without casters)

Circuit breaker/contactors

Graduated inner legs for convenient, precise bed height adjustment (23" to 28-1/8" [585mm to 715mm] without casters)

Circuit breaker/contactors

Graduated inner legs for convenient, precise bed height adjustment (23" to 28-1/8" [585mm to 715mm] without casters)

Circuit breaker/contactors

Graduated inner legs for convenient, precise bed height adjustment (23" to 28-1/8" [585mm to 715mm] without casters)

Circuit breaker/contactors

Graduated inner legs for convenient, precise bed height adjustment (23" to 28-1/8" [585mm to 715mm] without casters)

Circuit breaker/contactors

Graduated inner legs for convenient, precise bed height adjustment (23" to 28-1/8" [585mm to 715mm] without casters)

Circuit breaker/contactors

Graduated inner legs for convenient, precise bed height adjustment (23" to 28-1/8" [585mm to 715mm] without casters)

Circuit breaker/contactors

Graduated inner legs for convenient, precise bed height adjustment (23" to 28-1/8" [585mm to 715mm] without casters)

Circuit breaker/contactors

# The 3M-Matic™ 120af Automatic Adjustable Case Sealer

## Specifications

### Box:

Boxes must meet the current FBA/PMMI voluntary standards for RSC containers. Boxes not meeting these standards — for example, width is more than 50% of length or depth is less than 25% of length — should be test-run to ensure satisfactory machine performance.

Style: Regular slotted container (RSC).

125 to 275 p.s.i. bursting test, single wall B or C flute.

**Box size capacity:** (outside box dimensions)

	Minimum	Maximum
Length	6" [150 mm]	25" [635 mm]
Width	4.75" [120 mm]	20" [510 mm]
Height	4.75" [120 mm]	20" [510 mm]

Contact your 3M sales representative for application requirements outside the above specifications.

**Note:** The 3M-Matic™ 120af Automatic Adjustable Case Sealer can accommodate most boxes within the size range listed above. However, if

**Box Length in Direction of Seal** > .6

**Box Height**

boxes should be test-run to assure proper machine performance.

**Min. Max.**

Weight: 4 lbs. [2kg] 65 lbs. [29kg]

Packing: Contents must be heavy enough to hold box flat on conveyor bed with bottom flaps fully closed. Contents must support top flaps. Contents must not extend beyond top flap score line.

### Tape:

Scotch™ brand pressure-sensitive box sealing tapes.

### Tape width:

1-1/2 inches or 36 mm minimum to 2 inches or 48 mm maximum.

### Tape roll diameter

Up to 16 inches [406 mm] maximum on a 3-inch [75 mm] diameter core. (Accommodates Scotch brand film types — 1,000-yard rolls.)

### Power requirements:

**Electrical:** 115 VAC, 60 Hz, 2.8A, 320 Watts

**Pneumatic:** 75 PSIG [517 kPa gauge pressure], 1.5 SCFM [2.5m³/h 21°C, 101 kPa] maximum at maximum cycle rate.

### Operating conditions:

Use in dry, relatively clean environments at 40° to 120°F [5° to 49°C] with clean, dry boxes. Machine should not be washed down or subjected to conditions causing moisture condensation on components.

**Equipment Warranty and Limited Remedy:** THE FOLLOWING WARRANTIES ARE MADE IN LIEU OF ALL OTHER WARRANTIES, EXPRESS OR IMPLIED, INCLUDING, BUT NOT LIMITED TO, THE IMPLIED WARRANTY OF MERCHANTABILITY, THE IMPLIED WARRANTY OF FITNESS FOR A PARTICULAR PURPOSE AND ANY IMPLIED WARRANTY ARISING OUT OF A COURSE OF DEALING, A CUSTOM OR USAGE OF TRADE:

3M sells its 3M-Matic™ 120af Automatic Adjustable Case Sealer with the following warranties:

1. The belts and the Taping Head knife blades, springs and rollers will be free from all defects for ninety (90) days after delivery.
2. All other Taping Head parts will be free from all defects for three (3) years after delivery.
3. All other parts will be free from all defects for two (2) years after delivery.

If any part is proved to be defective within its warranty period, then the exclusive remedy and 3M's and seller's sole obligation shall be, at 3M's option, to repair or replace the part, provided the defective part is returned immediately to 3M's

### Operating rate:

Up to 27 boxes per minute depending on box length. Belt speed 75 FPM [23m/M].

### Machine dimensions:

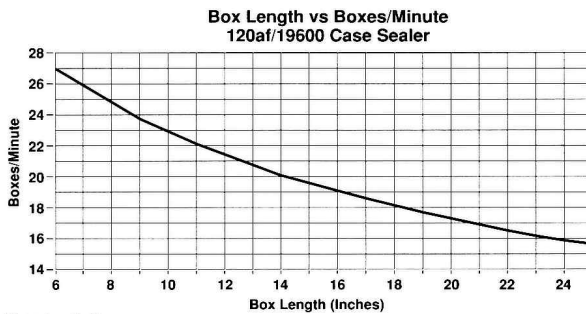
#### Overall dimensions

**Length:** 75.5 inches [1920 mm]  
**Width:** 35.38 inches [900 mm]  
**Height:** 53.38 inches [1355 mm] min.  
 74 inches [1880 mm] max.

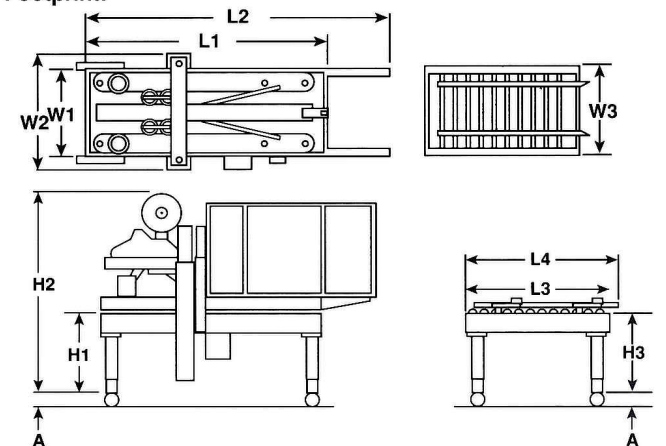
#### Conveyor

**bed height:** Adjustable up from a height of 23" [585 mm]

**Weight:** 545 pounds [248 kg] uncrated  
 631 pounds [287 kg] uncrated



### Footprint:



	A'	H1	H2	H3	W1	W2	W3	L1	L2	L3	L4
Min. inches	4-13/16	23	53-3/8	23	30-1/4	35-3/8	22-1/2	60	75-1/2	37-1/2	37-1/2
[mm]	[120]	[585]	[1355]	[585]	[770]	[900]	[570]	[1525]	[1920]	[955]	[955]
Max. inches	4-13/16	28-1/8	74	28-1/8	30-1/4	35-3/8	22-1/2	60	75-1/2	37-1/2	45-1/4
[mm]	[120]	[715]	[1880]	[715]	[770]	[900]	[570]	[1525]	[1920]	[955]	[1150]

factory or an authorized service station designated by 3M. A part will be presumed to have become defective after its warranty period unless the part is received or 3M is notified of the problem no later than five (5) calendar days after the warranty period. If 3M is unable to repair or replace the part within a reasonable time, then 3M, at its option, will replace the equipment or refund the purchase price. 3M shall have no obligation to provide or pay for the labor required to install the repaired or replacement part. 3M shall have no obligation to repair or replace (1) those parts failing due to operator misuse, carelessness, or due to any accidental cause other than equipment failure, or (2) parts failing due to non-lubrication, inadequate cleaning, improper operating environment, improper utilities or operator error.

**Limitation of Liability:** 3M and seller shall not be liable for direct, indirect, special, incidental or consequential damages based upon breach of warranty, breach of contract, negligence, strict liability or any other legal theory.

The foregoing Equipment Warranty and Limited Remedy and Limitation of Liability may be changed only by a written agreement signed by authorized officers of 3M and seller.



40% Pre-consumer waste paper  
 10% Post-consumer waste paper

## Masking and Packaging Systems Division

3M Center, Building 220-8W-01  
 St. Paul, MN 55144-1000

"3M-Matic," "AccuGlide" and "Scotch" are trademarks of 3M.

Printed in U.S.A.

© 3M 1997 70-0707-3353-3 (771)BE